

Strapbinder®



High Performance Industrial Hose Clamps, Sign Mounting Systems, Banding, Buckles and Application Tools



Made in the U.S.A.

PROVEN DESIGNS, BILLIONS OF TIMES | IDEALTRIDON.COM

8100 TRIDON DRIVE SMYRNA, TN 37167

1-800-251-3220 • STRAPBINDER.COM

High Quality Products

Strapbinder®, part of the Ideal-Tridon Group, is a securement industry leader of products used in a variety of industries, including agriculture, oil/petroleum, mining, chemical, marine, general construction, utilities and municipalities. Industrial hose line is used in the fabrication of industrial hose assemblies and consists of preformed smooth seal hose clamps. Our smooth seal clamps, J-Series, Pow'r Tight, and Center Punch, are engineered to minimize leak paths and ensure hose integrity. For larger diameter hoses and other general applications, including the fastening of signs, utility boxes and traffic signals, we offer stainless steel banding, buckles and a line of mounting brackets, accessories and battery and manual application tools.

We are committed to delivering quality products at a high level of service with the goal to exceed customer expectations. We will strive to continue this tradition and encourage you to be part of a long list of satisfied customers.

Index

Adaptor, J-series tool	9
Banding	6
Mill wound coils	6
Self dispensing coil, 100 ft.	6
Self dispensing coil, 200 ft.	6
Stainless steel coils.	6
Steel banding	10
Steelbinder job site.	10
Economy coils.	6
Ribbon wound coils	10
Strapbinder Manual Tools	9
Totes, 100 ft	6
Aluminum banding	7
Bigbinder banding	6
Sign hanging	11
Bolt clamp, Polebinder	11
Brackets, sign hanging	11
Buckles and seals	7
Aluminum seals.... .	7
Crimp type seals... .	7
Eared seals	7
Heavy duty	7
Screwbinder buckles	7
Winged seals	7
Center punch hose clamps	5
Center punch tools	9
Center punch attachment, Grip Clamp Tool	8
Clamps	3, 4, 5
Center punched stainless steel	5
Center punched galvanized carbon steel.	5
J-Series stainless steel	3
J-Series galvanized steel	3
Pow'r-Tight	4

- **Knowledgeable customer service**
- **In stock, no-hassle ordering**
- **Made in the U.S.A.**

T: 1-800-251-3220
F: 1-615-223-1550
STRAPBINDER.COM

Grip Clamp Tool and Attachments	8
Hose clamps, preformed	3, 4
ID Tags	10
J-Series hose clamps	3
Job site banding, coils, strapping	10
Leg brackets, flared	11
Leg brackets, straight	11
Mounting plates	11
Polebinder bolt clamp	11
Pow'r Tight	4
Pusher Seals	7
Preformed hose clamps	3, 4, 5
Seals & buckles	7
Sign Hanging Accessories	11
Sign securement hardware	11
Polebinder bolt clamp	11
Sign brackets	11
Flared leg brackets.	11
Straight leg brackets.	11
Snaplock	11
Self dispensing stainless coils	6
Screwbinder buckles	7
Spin tight tools	9
Stainless steel banding coils	6
Steelbinder banding coils	10
Totes, 100 ft coils	6
Tools, tensioning	8, 9, 11
Center punch	8, 9
J-Series adaptors.	9
Spin tight tools	9
Winged seals	7

Please note hose pictures on the front cover are for product viewing only and do not represent the recommended clamp orientation on a hose assembly.

PREFORMED HOSE CLAMPS

Smooth-Seal™ J-Series

Strapbinder J-Series clamps are ideal for most industrial hose clamping applications. Available in multiple diameters and band widths, our J-Series clamps are offered in 201 stainless steel or high strength galvanized steel with heavy duty stainless steel buckles. J-Series clamps will work with any of the bench mounted, pneumatic machines in the industry. Clamps can also be applied with the Strapbinder® ST-001 manual spin tight tool and the HBJ-001 adapter or for maximum efficiency, our battery operated Grip Clamp tool.



STAINLESS STEEL

Item No.	Clamp Inside I.D.		Band Width		Band Thickness		Qty/Box	Weight	
	in	mm	in	mm	in	mm		lbs	kg
HBJ-S201	13/16	20.5	3/8	9.4	.025	.64	100	3.6	1.6
HBJ-S242	1	25.4	1/4	6.3	.020	.51	100	2.1	1.0
HBJ-S243	1	25.4	3/8	9.4	.025	.64	100	3.4	1.5
HBJ-S202	1-3/8	34.8	3/8	9.4	.025	.64	100	4.7	2.1
HBJ-S203	1	25.4	1/2	12.7	.030	.76	100	6.5	2.9
HBJ-S204	1-1/4	31.7	1/2	12.7	.030	.76	100	7.2	3.3
HBJ-S241	1-3/8	34.8	1/4	6.3	.020	.51	100	2.5	1.1
HBJ-S205	1-1/2	38.1	5/8	15.7	.030	.76	100	10.4	4.7
HBJ-S206	1-3/4	44.4	5/8	15.7	.030	.76	100	11.3	5.1
HBJ-S245	2	50.8	3/8	9.4	.025	.64	100	5.5	2.5
HBJ-S207	2	50.8	5/8	15.7	.030	.76	100	12.2	5.5
HBJ-S208	2-1/4	57.1	5/8	15.7	.030	.76	100	13.3	6.0
HBJ-S209	2-1/2	63.5	5/8	15.7	.030	.76	100	13.9	6.3
HBJ-S210	2-3/4	69.8	3/4	19.0	.030	.76	50	9.2	4.2
HBJ-S211	3	76.2	3/4	19.0	.030	.76	50	9.7	4.4
HBJ-S212	3-1/2	88.9	3/4	19.0	.030	.76	50	10.8	4.9
HBJ-S213	4	101.6	3/4	19.0	.030	.76	25	6.1	2.8
HBJ-S214	4-1/2	114.3	3/4	19.0	.030	.76	25	6.7	3.0
HBJ-S215	5	127.0	3/4	19.0	.030	.76	25	7.2	3.3
HBJ-S216	6	152.4	3/4	19.0	.030	.76	25	8.2	3.7
HBJ-S218	7	177.8	3/4	19.0	.030	.76	25	10.2	4.6
HBJ-S219	8	203.2	3/4	19.0	.030	.76	25	11.0	5.0

GALVANIZED STEEL

Item No.	Clamp Inside I.D.		Band Width		Band Thickness		Qty/Box	Weight	
	in	mm	in	mm	in	mm		lbs	kg
HBJ-S301	13/16	20.5	3/8	9.4	.027	.69	100	3.6	1.6
HBJ-S343	1	25.4	3/8	9.4	.027	.69	100	3.9	1.8
HBJ-S302	1-3/8	34.8	3/8	9.4	.027	.69	100	4.7	2.1
HBJ-S304	1-1/4	31.7	1/2	12.7	.027	.69	100	7.2	3.3
HBJ-S305	1-1/2	38.1	5/8	15.7	.027	.69	100	10.4	4.7
HBJ-S306	1-3/4	44.4	5/8	15.7	.027	.69	100	11.3	5.1
HBJ-S307	2	50.8	5/8	15.7	.027	.69	100	12.2	5.5
HBJ-S308	2-1/4	57.2	5/8	15.7	.027	.69	100	13.3	6.0
HBJ-S309	2-1/2	63.5	5/8	15.7	.027	.69	100	13.9	6.3
HBJ-S310	2-3/4	69.8	3/4	19.0	.027	.69	50	9.2	4.2
HBJ-S311	3	76.2	3/4	19.0	.027	.69	50	9.7	4.4
HBJ-S312	3-1/2	88.9	3/4	19.0	.027	.69	50	10.8	4.9
HBJ-S313	4	101.6	3/4	19.0	.027	.69	25	6.1	2.8
HBJ-S314	4-1/2	114.3	3/4	19.0	.027	.69	25	6.7	3.0
HBJ-S315	5	127.0	3/4	19.0	.027	.69	25	8.2	3.7
HBJ-S318	7	177.8	3/4	19.0	.027	.69	25	10.2	4.6

Pow'r-Tight™ Clamp

The Strapbinder Pow'r-Tight clamps deliver best-in-class performance for demanding applications ideal for thick walled and higher durometer hose. Stronger than the J-Series clamp, the Pow'r Tight is constructed with 201 ¼" hard stainless steel for exceptional band strength. The Pow'r tight has a smooth seal design for gap free contact, a heavy duty buckle, and is double wrapped to provide optimal holding power. Offered in diameters from 2" to 9".



STAINLESS STEEL

Item No.	Clamp Inside I.D.		Band Width		Band Thickness		Qty/Box	Weight	
	in	mm	in	mm	in	mm		lbs	kg
HDSL227	2	50.8	0.75	19.1	0.030	0.76	100	16.9	7.7
HDSL210	2.75	69.8	0.75	19.1	0.030	0.76	50	10.3	4.7
HDSL211	3	76.2	0.75	19.1	0.030	0.76	50	10.8	4.9
HDSL212	3.5	88.9	0.75	19.1	0.030	0.76	50	6.2	2.8
HDSL213	4	101.6	0.75	19.1	0.030	0.76	25	6.7	3.0
HDSL214	4.5	114.3	0.75	19.1	0.030	0.76	25	7.2	3.3
HDSL215	5	127	0.75	19.1	0.030	0.76	25	7.9	3.6
HDSL216	6	152.4	0.75	19.1	0.030	0.76	25	8.9	4.0
HDSL218	7	177.8	0.75	19.1	0.030	0.76	25	9.9	4.5
HDSL219	8	203.2	0.75	19.1	0.030	0.76	25	11.1	5.0
HDSL228	9	228.6	0.75	19.1	0.030	0.76	10	12.2	5.6



PREFORMED HOSE CLAMPS

Smooth-Seal™ Center Punch

Strapbinder center punch clamps are an economical alternative for less demanding hose applications. Unlike other competitive clamps on the market, Strapbinder offers the only center punch clamp that provides a smooth inside diameter to minimize leak paths. Available in multiple diameters, center punch clamps are 5/8" wide and double wrapped for added strength. They are available in 201 stainless steel or high strength galvanized steel with heavy duty stainless steel buckles. Center punch clamps can be applied with our HBC300 Tensioner tool or our Grip Clamp battery operated tool.



STAINLESS STEEL

Item No.	Clamp ID		Qty/Box	Carton Weight	
	inch	mm		lbs	kg
HBCP3S*	13/16	20.5	100	3.6	1.6
HBCP311S*	1-3/8	34.8	100	4.6	2.1
HBCP4S	1	25.4	100	8.3	3.8
HBCP5S	1-1/4	31.7	100	8.7	3.9
HBCP6S	1-1/2	38.1	100	9.7	4.4
HBCP7S	1-3/4	44.4	100	10.6	4.8
HBCP8S	2	50.8	100	11.5	5.2
HBCP9S	2-1/4	57.1	100	12.6	5.7
HBCP10S	2-1/2	63.5	50	6.8	3.1
HBCP11S	2-3/4	69.8	50	7.3	3.3
HBCP12S	3	76.2	50	7.7	3.5
HBCP14S	3-1/2	88.9	50	8.7	3.9
HBCP16S	4	101.6	25	4.9	2.2
HBCP18S	4-1/2	114.3	25	5.5	2.5
HBCP20S	5	127.0	25	5.9	2.7
HBCP24S	6	152.4	25	6.8	3.1
HBCP28S	7	177.8	25	7.4	3.4
HBCP32S	8	203.2	25	8.2	3.7



GALVANIZED CARBON STEEL

Item No.	Clamp ID		Qty/Box	Carton Weight	
	inch	mm		lbs	kg
HBCP3*	13/16	20.5	100	3.6	1.6
HBCP311*	1-3/8	34.8	100	4.6	2.1
HBCP4	1	25.4	100	8.3	3.8
HBCP5	1-1/4	31.7	100	8.7	3.9
HBCP6	1-1/2	38.1	100	9.7	4.4
HBCP7	1-3/4	44.4	100	10.6	4.8
HBCP8	2	50.8	100	11.5	5.2
HBCP9	2-1/4	57.1	100	12.6	5.7
HBCP10	2-1/2	63.5	50	6.8	3.1
HBCP11	2-3/4	69.8	50	7.3	3.3
HBCP12	3	76.2	50	7.7	3.5
HBCP14	3-1/2	88.9	50	8.7	3.9
HBCP16	4	101.6	25	4.9	2.2
HBCP18	4-1/2	114.3	25	5.5	2.5
HBCP20	5	127.0	25	5.9	2.7
HBCP24	6	152.4	25	6.8	3.1
HBCP28	7	177.8	25	7.4	3.4
HBCP32	8	203.2	25	8.2	3.7

* 3/8" band width x 0.027" thickness (9.4 mm x 0.69 mm)

STAINLESS STEEL BANDING



Strapbinder stainless steel banding is available in Type 201, 304 or 316 stainless steel. Strapbinder stainless is ideal for large diameter hose assemblies, sign securement, insulation applications and general construction use. It is made with a full round edge for safer handling.

Type 201 Stainless Steel

Type 201 stainless steel has excellent mechanical properties and strength. Due to its high work hardening rate, it possesses uniform elongation for improved stretchability for severe forming applications such as strapping bands and preformed hose clamps.

Type 304 Stainless Steel

Type 304 stainless steel is an 18% chromium and 8% nickel alloyed stainless steel. Used most often in outdoor industrial applications, it offers good corrosion resistance and is weldable.

Type 316 Stainless Steel

Type 316 stainless steel provides superior corrosion resistance, making it ideal for use near salt water and petrochemical facilities.



Item No.	Width		Type	Thickness		Weight		Qty/Coil	
	inch	mm		inch	mm	lbs	kg	ft	M

100 ft. Self Dispensing Coils

ST202	1/4	6.3	201	.020	.51	1.7	0.9	100	30
ST203	3/8	9.5	201	.025	.63	3.2	1.6	100	30
ST204	1/2	12.7	201	.030	.76	5.1	2.4	100	30
ST205	5/8	15.8	201	.030	.76	6.4	3.0	100	30
ST206	3/4	19.0	201	.030	.76	7.7	3.6	100	30
ST404	1/2	12.7	316	.030	.76	5.1	2.4	100	30
ST406	3/4	19.0	316	.030	.76	7.7	3.6	100	30



Item No.	Width		Tote Color	Thickness		Weight		Qty/Coil	
	inch	mm		inch	mm	lbs	kg	ft	M

100 ft. Plastic Totes (Type 201 Stainless Steel)

ST204B	1/2	12.7	Blue	.030	.76	5.1	2.4	100	30
ST205G	5/8	15.8	Green	.030	.76	6.4	3.0	100	30
ST206R	3/4	19.0	Red	.030	.76	7.7	3.6	100	30



200 ft. Economy Coils for Light Duty Applications

ST128/904	1/2	12.7	304	.015	.38	5.5	2.5	200	61
ST183/914	1/2	12.7	304	.020	.51	7.0	3.2	200	61
ST184	1/2	12.7	304	.025	.63	8.5	3.6	200	61
ST129/905	5/8	15.8	304	.015	.38	6.4	3.0	200	61
ST129.5/915	5/8	15.8	304	.020	.51	8.5	3.6	200	61
ST163/916	3/4	19.0	304	.020	.51	11.2	5.1	200	61
ST165	3/4	19.0	304	.025	.63	12.7	5.8	200	61



Bigbinder Band

ST430	3/4	19.0	201	.044	1.1	11.6	5.4	100	30
ST431	1	25.4	201	.044	1.1	13.7	6.4	100	30
ST432	1-1/4	31.8	201	.044	1.1	17.2	8.0	100	30

Mill Wound Coils

BLCPX04155	1/2	12.7	Oscillate	.015	.38	100	45.4	3,920	1195
305SSR900	1/2	12.7	Ribbon	.020	.51	39	17.7	900	274
305SSV3000	1/2	12.7	Oscillate	.020	.51	100	45.4	3,000	914
311SSR900	3/4	19.0	Ribbon	.020	.51	42	19.1	900	274
311SSV2000	3/4	19.0	Oscillate	.020	.51	100	45.4	2,000	610
BLCPX05202	5/8	15.8	Oscillate	.020	.51	100	45.4	2,300	701



Strapbinder seals and buckles are ideal for forming applications such as strapping bands and preformed hose clamps.



Buckles

Available in an ear style or heavy duty, Strapbinder buckles are made with Type 201 or Type 316 stainless steel to suit a wide variety of applications.

Item No.	Buckle Style	Material	Width		Qty/Box	Weight	
			inch	mm		lbs	kg
ST252	Ear	201	1/4	6.3	100	.3	.1
ST253	Ear	201	3/8	9.5	100	.8	.4
ST254	Ear	201	1/2	12.7	100	2.1	1.0
ST255	Ear	201	5/8	15.8	100	2.4	1.1
ST256	Ear	201	3/4	19.0	100	3.7	1.7
ST454	Ear	316	1/2	12.7	100	2.1	1.0
ST456	Ear	316	3/4	19.0	100	3.7	1.7
ST440	Heavy duty	201	3/4	19.0	25	1.8	.8
ST441	Heavy duty	201	1	25.4	25	2.4	1.1
ST442	Heavy duty	201	1-1/4	31.8	25	3.2	1.4



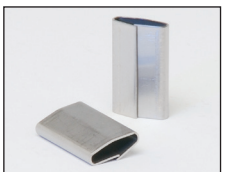
Wing Seals

Grade 304 Stainless Steel Wing Seals can be used with Strapbinder economy stainless steel strapping and Steelbinder Strapping.

Item No.	Material	Width		Qty/Box	Weight	
		inch	mm		lbs	kg
ST154	Stainless Steel	1/2	12.7	100	1.1	0.5
ST156	Stainless Steel	3/4	19.0	100	2.1	0.9
ST202SS	Stainless Steel	1/2	12.7	1,000	10	5.0
ST203SS	Stainless Steel	5/8	15.8	1,000	18	5.0
ST204SSHD	Stainless Steel	3/4	19.0	1,000	21	9.5
202AL	Aluminum	1/2	12.7	1,000	3.0	1.3

Aluminum Banding (for use with Aluminum Wing Seals)

Item No.	Width		Thickness		Weight		Qty/Coil	
	inch	mm	inch	mm	lbs	kg	ft	M
SC305AL	1/2	12.7	.020	.51	2.4	1.1	200	61



Specialty Seals

Grade 304 Crimp style stainless steel pusher seals. Use with single notch sealers. Ideal for outdoor industrial applications.

Item No.	Width		Qty/Box	Weight	
	inch	mm		lbs	kg
ST1532SS	1/2	12.7	1,000	12.0	5.5
ST1534SS	3/4	19.0	1,000	15.0	6.8



Screwbinder™ Buckles

Screwbinder Buckles are used in applications when a temporary clamp is desired or space limitations do not allow for tool roll-over. A set screw locks the band after tensioning.

Item No.	Width		Qty/Box	Weight	
	inch	mm		lbs	kg
ST724	1/2	12.7	25	.5	0.2
ST726	3/4	19.0	25	.9	0.4

GRIP CLAMP TENSIONING TOOLS

For Hose Clamp and Sign Securement



Part #800500

Battery Powered Clamping Tool

Battery powered clamping tool for stainless and galvanized 5/8" and 3/4" J-Series clamps. Tensions, locks and cuts the strap. Unlimited take up, no refeeding. 125 clamps per charge. Battery & charger included.



See our video at
STRAPBINDER.COM



Part #800505

Battery Powered Bench Mounted System

Battery powered clamping tool with foot pedal and bench mount fixture for J-Series clamps. Dual use versatility. Portable for field repairs but also bench mountable for in-house production assemblies. Battery & charger included.



Part #800800

Battery Powered Center Punch Tensioning Tool

Battery powered center punch tensioning tool for 5/8 stainless steel and galvanized clamps. Single touch operation. Preset tension settings yield constant tension on each clamp applied. Battery & charger included.

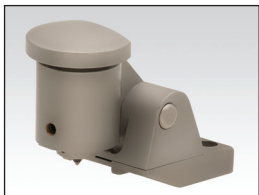


Part #800805

Battery Powered Band and Buckle Tensioning Tool

Consistent tensioning of 1/2" - 5/8" and 3/4" stainless strapping. Excellent option for large diameter hose, sign securement and bundling applications. Use with ear style buckles or wing seals. Battery, charger, bench mount fixture & foot pedal included.

ACCESSORIES



Part #800638

Center Punch Attachment

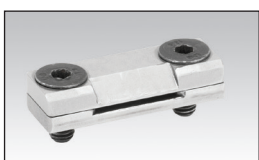
Center Punch attachment easily attaches to the GripClamp tool for the application of center punch clamps. Will accept most brands of 5/8" stainless and galvanized clamps.



Part #800637

Band and Buckle Attachment

Band and buckle attachment easily attaches to the GripClamp tool for use with band and buckle.



Part #800802

J Series Attachment

J Series attachment easily attaches to the GripClamp tool for the application of stainless and galvanized J Series clamps.

In stock, no-hassle ordering 1-800-251-3220 • STRAPBINDER.COM

TENSIONING TOOLS

For Hose and Sign Securement

For hose and sign securement applications, Strapbinder offers center punch tools for use with center punch clamps and spin tight tools to tension bands and buckles. All of our tools are lightweight and easy to use.



Center Punch Tools

HBC-300

The HBC-300 is a rugged, ratchet action tool designed for fast, efficient application of center punch clamps.

HBC-032

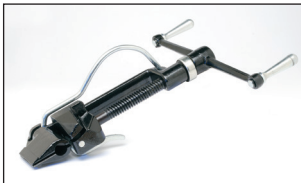
This adaptor is easily inserted into the HBC-300 center punch tool. For use with 3/8" (9.4 mm) band width clamps.

F38

The light duty F38 is a ratchet style center punch clamp application tool. Its portable design makes it ideal for field repairs.

Item No.	Description	Weight	
		lbs	kg
HBC-300	Center punch for 5/8" (15.7 mm) clamps	3.0	1.4
HBC-032	3/8" (9.4 mm) adaptor insert for HBC-300 tool	0.5	0.2
F38*	Light duty punch for 3/8" and 5/8" (9.4—15.7 mm) clamps	1.0	0.2

* ⚠ Warning: this product can expose you to chemicals including DINP, Di-isobutyl Phthalate, which is known to the State of California to cause cancer and/or birth defects or other reproductive harm. For more information, visit www.P65warnings.ca.gov



Spin Tight Tools

The spin tight tensioner features a spring-loaded gripper for more efficient band handling. A black chromium finish provides corrosion resistance. The ST001 and the ST402B are used for tensioning stainless steel bands and buckles.

ST-001

The ST-001 features a spring loaded gripper lever for more efficient strap handling. The cut-off handle is vinyl clad for easier operation. For use up to 3/4" x .030 band width.

ST402B

For heavy duty applications, the ST402B Bigbinder Spin Tight Tool, can pull up to 6,000 lbs. (2668 N) of tension. The built-in cutter cuts off band prior to buckle closing.

Item No.	Description	Weight	
		lbs	kg
ST-001	For stainless steel bands up to 3/4" x .030 (19 x .76 mm) Tensions up to 2400 lbs. (1068 N)	4.5	2.0
ST402B	For stainless steel bands from 3/4" x .044 to 1-1/4" x .048 (19 x 1.12 mm to 31.8 x 1.22 mm) Tensions up to 6,000 lbs. (2668N)	11.0	5.0

J-Series Adaptor

HBJ-001

The HBJ-001 adaptor allows J-Series preformed clamps to be applied in conjunction with the ST-001 Spin Tight Tool. High tension capability with simple "lift and lock" securement.

Item No.	Description	Weight	
		lbs	kg
HBJ-001	For use with J-series preformed clamps and ST-001 spin tight tool	1.5	0.7

Steelbinder™ "Job Site" Strapping

Painted and waxed Steelbinder is made from tempered shock resistant steel for a wide range of packaging applications. Ductile enough to withstand a 100 degree bend without breaking, Steelbinder has smooth edges and exhibits a constant strength and elongation. It is used for a variety of light duty packaging applications and is ideal for round and irregular shaped packages.



Economy Coils-Job Site

Item No.	Width		Thickness		Break Strength	Weight		Qty/Coil	
	inch	mm	inch	mm	lbs	lbs	kg	ft	M

Ribbon Wound Coils

ST305X	1/2	12.7	.020	.51	800	29.0	13.2	865	264
ST306X	1/2	12.7	.025	.63	1,000	29.0	13.2	690	210
ST308	5/8	15.8	.020	.51	1,000	37.0	16.8	865	264
ST309	5/8	15.8	.025	.63	1,250	37.0	16.8	690	210
ST311	3/4	19.0	.020	.51	1,200	44.0	20.0	865	264
ST312	3/4	19.0	.025	.63	1,500	44.0	20.0	690	210

* Use stainless steel wing seals with Steelbinder Strapping.



Portable Strap Dispenser For Steelbinder™ Strapping ST400

Heavy duty, lightweight strap dispenser features brackets to hold tensioning and cutting tools along with a covered tray to carry seals. Handle is provided for maximum portability.

Item No.	Description	Coil type	Strap size		Weight	
			inches	mm	lbs	kg
ST400	Vertical dispenser	Oscillated	3/8-3/4	9.5-19.0	15	6.8



Steelbinder™ Tensioner ST101

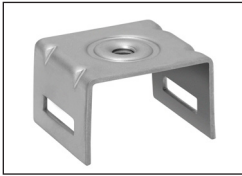
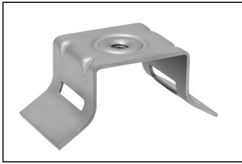
This heavy duty windless tensioner is used with stainless steel strapping. It features a cutter and hammer knob for wing seal closing. For use with 3/8" x 3/4" x .030 (9.3-19.0 x 0.76 mm) maximum strapping. Highly portable, fast, reliable ratchet type tool. For sign hanging, insulation work and general application.



Pistol Grip Tensioner ST1902D

Fast, reliable, easy to use for light duty application with 3/8" x 3/4" x .023 (9.3-19.0 x 0.58 mm) maximum strapping. Re-settable rack for additional take-up. One hand pistol grip operation is ideal for insulation and other light duty applications.

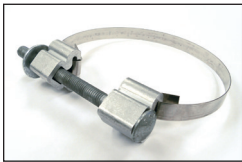
Item No.	Description	Weight	
		lbs	kg
ST101	3/8"-3/4" x .030 (9.3-19.0 x 0.76 mm)	3.0	1.4
ST1902D	3/8" x 3/4" x .023 (9.3-19.0 x 0.58 mm) pistol grip	2.5	1.1



Sign Brackets

Stainless steel sign brackets are available for sign mounting, using Strapbinder stainless steel coils. The brackets are threaded and available with or without bolts and washers.

Item No.	Type	Description	Qty/Box	Weight	
				lbs	kg
AACS216455	Bolt	Stainless Steel 5/16" - 18 x 3/4"	50	1.5	.7
AAWL213455	Washer	Plastic 7/8" OD x 3/8" ID	50	.5	.2
ST000	Straight Leg Brackets	Stainless Steel with SS Bolts and Plastic Washer	50	7.6	3.4
ST004	Straight Leg Brackets	Stainless Steel	50	6.0	2.7
ST021	Flared Leg Brackets	Stainless Steel with SS Bolt and Plastic Washer	50	7.6	3.4
ST022	Flared Leg Brackets	Stainless Steel	50	6.0	2.7



Polebinder Bolt Clamp

Extruded aluminum fittings with zinc plated bolt, nut and washer. To be used with Strapbinder Band for mounting pole hardware.

Item No.	Description	Qty/Box	Weight	
			lbs	kg
ST500	Polebinder/bolt clamp for use with 3/4" strapbinder band. Includes plated nut, bolt 3/8-16 x 6" and washer	50	25	11.3
ST504	Polebinder bolt/clamp for use with 1-1/4" (31.7 mm) Bigbinder band. Includes plated nut, bolt 5/8-11 x 8" & washer	25	31.5	14.3

Special order only. Non-cancellable, non-returnable.

Mounting Plates

Strapping holds this extruded aluminum mounting plates to utility poles. Includes 5/8-11 x 2" bolt and nut.

Item No.	Description	Qty/Box	Weight	
			lbs	kg
ST510	Mounting Plate 1-1/2" x 4-3/4" with 2" Plated Bolt	25	15	6.8
ST512	Heavy Duty Mounting Plate 1-1/2" x 5-1/4" with 2" Plated Bolt	25	21.3	9.7

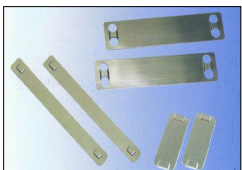


Snaplock® Quick Release

Worm drive clamps are good for closed system applications where the clamp must be disengaged to be applied. The swivel-action locking of screw to band makes installation and removal much faster. All Snaplock housings are 200 grade stainless steel.

Item No.	Description
56128	1-3/4" to 8-1/2"
56188	2" to 12-1/4"

Ideal-Tridon catalog page 22



ID Tags

The tags are manufactured with Grade 316 stainless steel and can be fastened with Strapbinder Power Wrap ties.

Item No.	Description	Qty/Box	Weight	
			lbs	kg
ST750350	3/4" X 3-1/2"	100	.6	.30
ST750200	3/4" X 2"	100	.5	.20
ST150250	1-1/2" X 2-1/2"	100	1.4	.67



In stock, no-hassle ordering 1-800-251-3220 • STRAPBINDER.COM

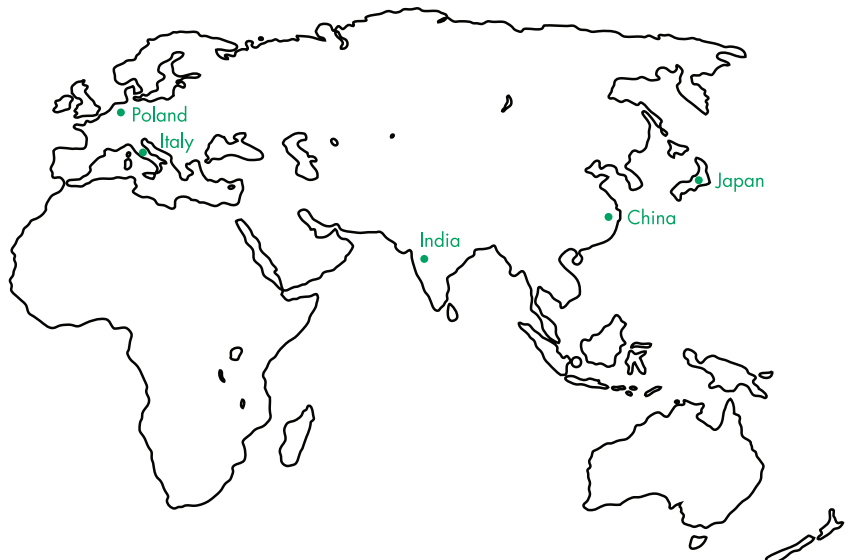
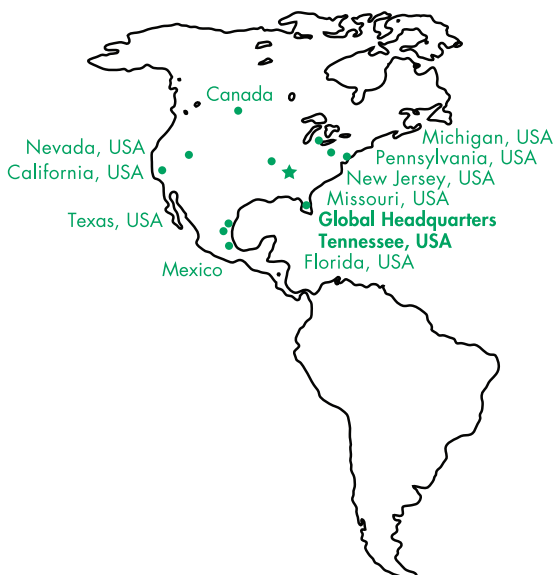


Innovation. Quality. Service. Connections are at the center of the Ideal Tridon Group.

We built a family of leading brands whose products connect and support pipe, tube, and hose that convey gases, liquids, and electricity. We are the global leader in worm gear, t-bolt, band, strut, specialty clamps, supports for hose, conduit, and fastening solutions, as well as fittings and couplings. Headquartered in Smyrna, Tennessee, the Ideal-Tridon Group has facilities throughout North America, Europe, and Asia.

For more information about Ideal-Tridon Group, visit <https://www.idealtridon.com>.

Strapbinder®



Strapbinder®



High Performance Industrial Hose Clamps, Sign Mounting Systems, Banding, Buckles and Application Tools



1-800-251-3220 • STRAPBINDER.COM

IDEALTRIDON.COM | PROVEN DESIGNS, BILLIONS OF TIMES

GLOBAL HEADQUARTERS

8100 TRIDON DRIVE SMYRNA, TN 37167 USA

800.251.3220 | 615.459.5800

USA | MEXICO | CHINA | JAPAN | POLAND | INDIA



PLEASE RECYCLE

© 2020 Ideal Clamp Products, Inc. — Part No. 99999-8008-099 DEC 2016