



Banner & Sign Hanging Products



SIGN, SIGNAL AND TRAFFIC CONTROL FASTENING PRODUCTS

Our full line of corrosion-resistant products, including stainless steel strapping, buckles and sign brackets are ideal for round and irregular mounting surfaces without the need for a sealer.

PRIMARY APPLICATIONS

- Sign and signal mounting
- Telecommunications
- Utility
- Cable bundling

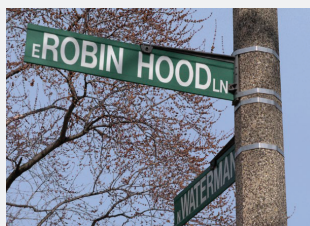
INDUSTRIES

- Public Works
- Municipalities
- Transportation
- Traffic Control

APPLICATIONS



Intersection Signage



Street Sign



Traffic Signal Mounting



Utility Box



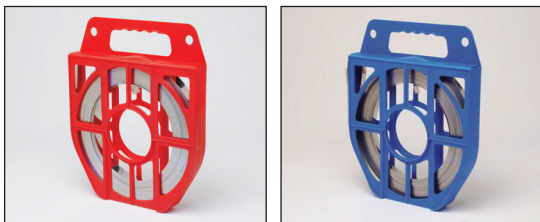
Sign Brackets on Pole

SIGN HANGING HARDWARE

Stainless Steel Strapping

Strapbinder stainless steel strapping, available in 201, 304 or 316 stainless, is ideal for sign securement applications. It is produced with a deburred edge for safer handling.

Light Duty Grade 304 strapping is also available in different widths and gauges.



Strapbinder No.	Description
-----------------	-------------

STAINLESS STEEL STRAPPING

ST206R	3/4" x .030" x 100' 201 SS IN RED TOTE
ST204B	1/2" x .030" x 100' 201 SS IN BLUE TOTE

Additional box sizes and color totes available.

BUCKLES

ST254	1/2" SS BUCKLE
ST255	5/8" SS BUCKLE
ST256	3/4" SS BUCKLE

SNAPLOCK® QUICK RELEASE CLAMPS

56128	1 3/4" TO 8 1/2"
56188	2" TO 12 1/4" (Ideal-Tridon Catalog, p. 22)

NEW & IMPROVED SIGN BRACKETS

ST022	FLARED LEG SS SIGN BRACKET
ST004	STRAIGHT LEG SS SIGN BRACKET

POLEBINDER BOLT CLAMP

ST500	Polebinder/bolt clamp for use with 3/4" strapbinder band. Includes plated nut, bolt 3/8-16 x 6" and washer
ST504	Polebinder bolt/clamp for use with 1-1/4" (31.7 mm) Bigbinder band. Includes plated nut, bolt 5/8-11 x 8" and washer

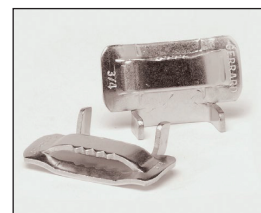
Special order only. No returns or cancellations.

APPLICATION TOOLS

ST001	SPIN TIGHT TENSIONING
ST101	WINDLESS TENSIONING TOOL
9999V	FLEX DRIVER (Ideal-Tridon Catalog, p. 25)

Buckles

Strapbinder buckles are ideal for conforming to irregular shapes. Strapbinder's heavy duty, ear style buckles are made with 201 or 316 stainless and galvanized carbon steel to suit a wide variety of applications.



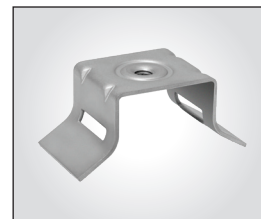
SNAPLOCK® Quick Release

Worm drive clamps are good for closed system applications where the clamp must be disengaged to be applied. The swivel-action locking of screw to band makes installation and removal much faster. All Snaplock housings are 200 grade stainless steel.



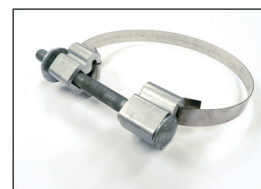
New & Improved Sign Brackets

Stainless steel sign brackets are available in straight leg or flared leg for sign mounting. Brackets are threaded and can be ordered with or without bolts and washers.



Polebinder Bolt Clamp

Extruded aluminum fittings with zinc plated bolt, nut and washer. To be used with Strapbinder® Band for mounting pole hardware.



Application Tools

Strapbinder offers a full line of portable, lightweight and versatile hand tools for applying sign mounting products.



In stock, no-hassle ordering 1-800-251-3220 • STRAPBINDER.COM



IDEALTRIDON.COM | PROVEN DESIGNS, BILLIONS OF TIMES

GLOBAL HEADQUARTERS

8100 TRIDON DRIVE SMYRNA, TN USA 800.251.3220 | 615.459.5800

USA | CANADA | MEXICO | CHINA | JAPAN | POLAND | ITALY | INDIA