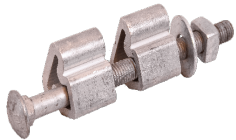




# POLEBINDER BOLT CLAMPS & MOUNTING HARDWARE

Utilized in the utility industry to secure and mount power & telecommunication cables, conduits, cameras, signs, insulators, lighting, antennas, control boxes, transformers, and electrical equipment to utility poles, communication towers and underground distribution.

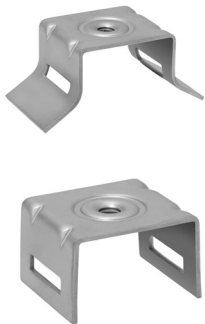
## Polebinder Bolt Clamp



Extruded aluminum fittings with zinc plated bolt, nut and washer. To be used with Strapbinder Band for mounting pole hardware.

Item No.	Description	Qty/Box	Weight Each	
			lbs	kg
ST500	Polebinder/bolt clamp for use with 3/4" strapbinder band. Includes plated nut, bolt 3/8-16 x 6" and washer	25	.43	.19
ST504	Polebinder bolt/clamp for use with 1-1/4" (31.7 mm) Bigbinder band. Includes plated nut, bolt 5/8-11 x 8" & washer	25	1.43	.65

## Sign Brackets



201 stainless steel sign brackets are available for sign mounting, using Strapbinder stainless steel coils and banding up to 3/4" wide. The brackets are threaded and available with or without bolts and washers.

Item No.	Type	Description	Qty/Box	Weight	
				lbs	kg
AACS216455	Bolt	Stainless Steel 5/16" - 18 x 3/4"	50	1.5	.7
AAWL213455	Washer	Plastic 7/8" OD x 3/8" ID	50	.5	.2
ST000	Straight Leg Bracket Pack	Stainless Steel Bracket with SS Bolts and Plastic Washer	50	7.6	3.4
ST004	Straight Leg Bracket	Stainless Steel Bracket only	50	6.0	2.7
ST021	Flared Leg Bracket Pack	Stainless Steel Bracket with SS Bolt and Plastic Washer	50	7.6	3.4
ST022	Flared Leg Bracket	Stainless Steel Bracket only	50	6.0	2.7

## Mounting Bracket



Strapping holds this extruded aluminum mounting plates to utility poles. Includes bolt & nut.

Item No.	Description	Qty/Box	Weight Each	
			lbs	kg
ST510	Mounting Bracket 1-1/2" x 4-3/4" with 5/8-11 x 2" Plated Bolt	25	.57	.26
ST512	Heavy Duty Mounting Bracket 1-1/2" x 5-1/4" with 5/8-11 x 2" Plated Bolt	25	.78	.35
ST513	Heavy Duty Mounting Bracket 1-1/2" x 5-1/4" with 5/8-11 x 3" Bolt	25	.84	.38





## Conduit Stand-Off Bracket

For mounting 1" through 6" conduit to utility poles and can adjust from 4-1/2" to 6" stand-off. Supplied with H-Bar which captures 1/2" Bolt Heads. Utilize with 1/2" Strapbinder banding.

Item No.	Description	Qty/Box	Weight Each	
			lbs	kg
ST604612	Adjustable Stand-Off, Aluminum, with 12" H-Bar Length, Use with 1/2" Banding	5	1.82	.83
ST604624	Adjustable Stand-Off, Aluminum, with 24" H-Bar Length, Use with 1/2" Banding	5	2.46	1.12
ST604636	Adjustable Stand-Off, Aluminum, with 36" H-Bar Length, Use with 1/2" Banding	5	3.08	1.4



## Transformer Mounting Bracket

Item No.	Description	Qty/Box	Weight Each	
			lbs	kg
ST6157	For use with 3/4" or 1-1/4" Banding. Transformer bracket for mounting (1) 30KVA thru 100KVA transformer, 12" or 24" EEI-NEMA type A and B lugs.	1	7.13	3.23
ST6157AC	Adaptor Plate for mounting 167KVA & larger transformer with NEMA type C lugs (2 plates required per txf). Two 5/8" x 2" hot dipped galvanized bolts, nuts and lock washers with each plate	2	3.4	1.54

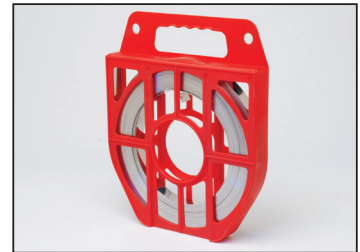
## Related Products



100ft Coils



Bigbinder Bands



100ft Plastic Totes



Spin Tight Tool  
ST001 & ST402B



Steelbinder™ Tensioner  
ST101



Battery Powered  
Tensioning Tools